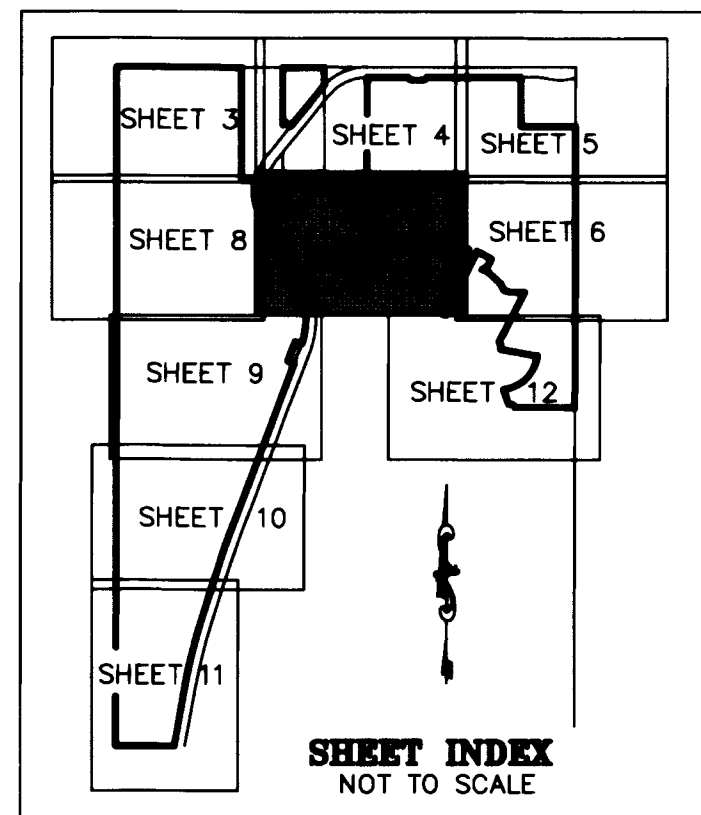


MATCHLINE SEE SHEET 4 OF 12

PENNOCK PRESERVE PUD, PHASE 1

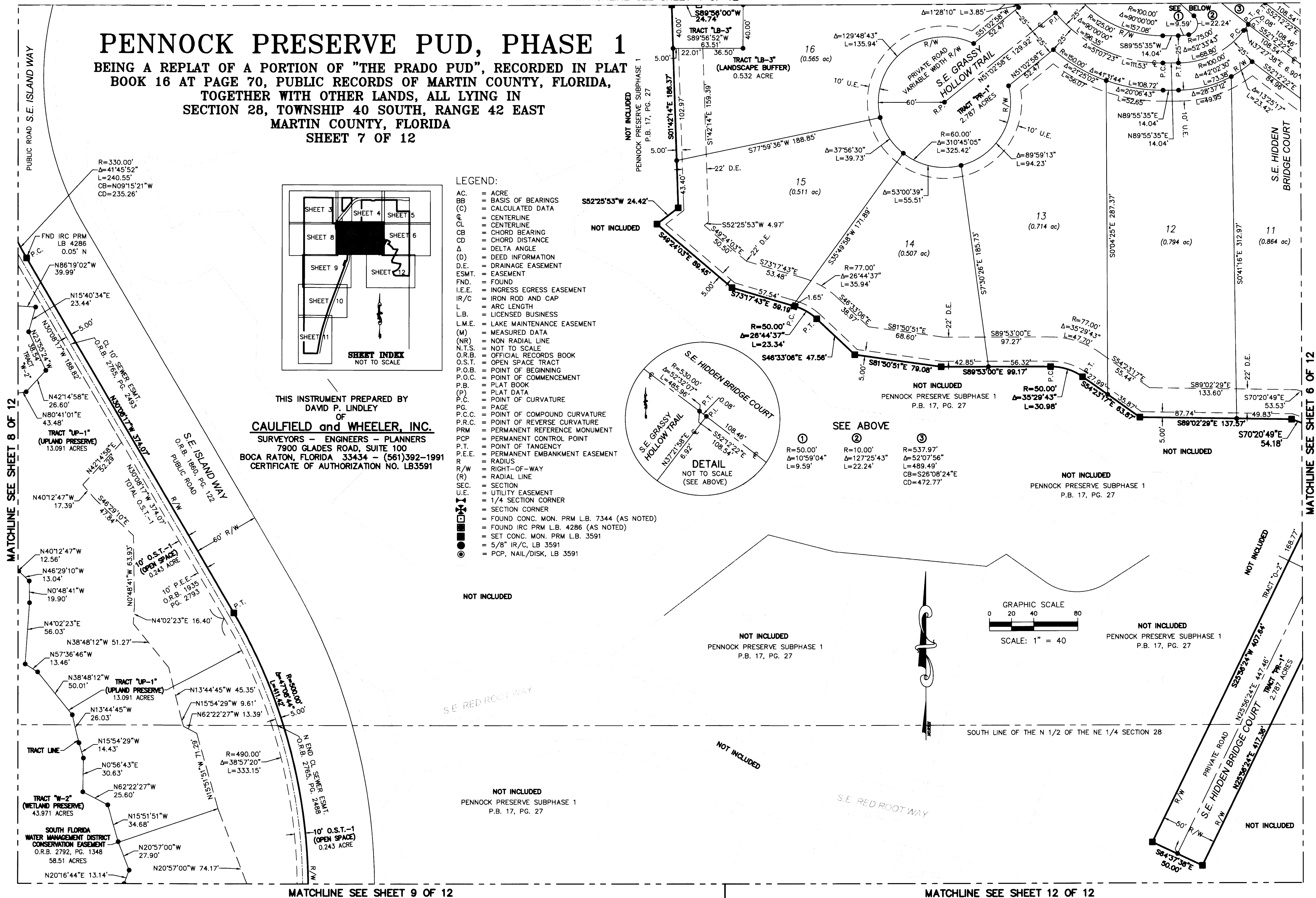
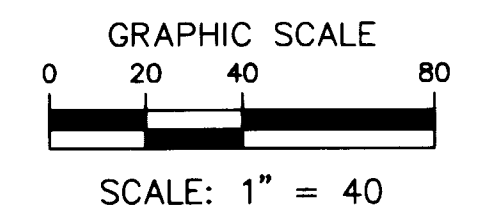
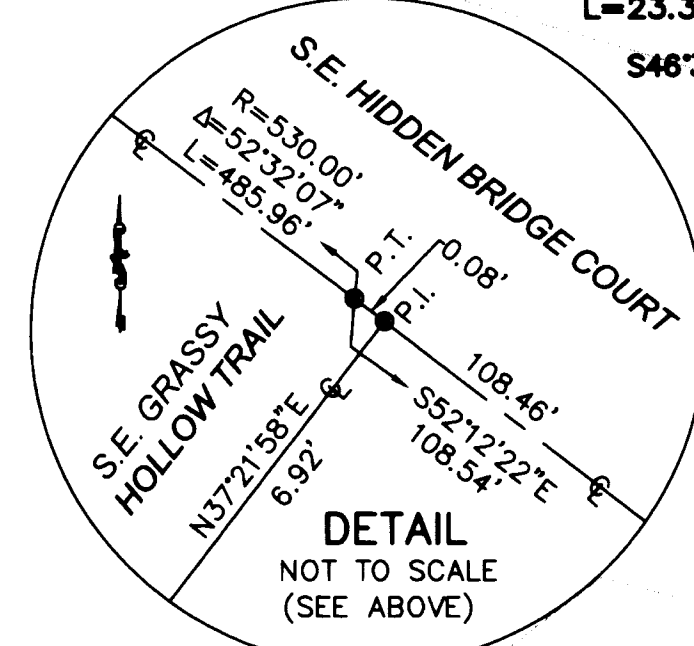
BEING A REPLAT OF A PORTION OF "THE PRADO PUD", RECORDED IN PLAT BOOK 16 AT PAGE 70, PUBLIC RECORDS OF MARTIN COUNTY, FLORIDA, TOGETHER WITH OTHER LANDS, ALL LYING IN SECTION 28, TOWNSHIP 40 SOUTH, RANGE 42 EAST MARTIN COUNTY, FLORIDA
SHEET 7 OF 12



THIS INSTRUMENT PREPARED BY
DAVID P. LINDLEY
OF
CAULFIELD and WHEELER, INC.
SURVEYORS - ENGINEERS - PLANNERS
7900 GLADES ROAD, SUITE 100
BOCA RATON, FLORIDA 33434 - (561)392-1991
CERTIFICATE OF AUTHORIZATION NO. LB3591

LEGEND:

- AC. = ACRE
- BB = BASIS OF BEARINGS
- (C) = CALCULATED DATA
- CL = CENTERLINE
- CB = CHORD BEARING
- CD = CHORD DISTANCE
- Δ = DELTA ANGLE
- (D) = DEED INFORMATION
- D.E. = DRAINAGE EASEMENT
- ESMT. = EASEMENT
- FND. = FOUND
- I.E.E. = INGRESS EGRESS EASEMENT
- IR/C = IRON ROD AND CAP
- L = ARC LENGTH
- L.B. = LICENSED BUSINESS
- L.M.E. = LAKE MAINTENANCE EASEMENT
- (M) = MEASURED DATA
- (NR) = NON RADIAL LINE
- N.T.S. = NOT TO SCALE
- O.R.B. = OFFICIAL RECORDS BOOK
- O.S.T. = OPEN SPACE TRACT
- P.O.B. = POINT OF BEGINNING
- P.O.C. = POINT OF COMMENCEMENT
- P.B. = PLAT BOOK
- (P) = PLAT DATA
- P.C. = POINT OF CURVATURE
- PG. = PAGE
- P.C.C. = POINT OF COMPOUND CURVATURE
- P.R.C. = POINT OF REVERSE CURVATURE
- PRM = PERMANENT REFERENCE MONUMENT
- PCP = PERMANENT CONTROL POINT
- P.T. = POINT OF TANGENCY
- P.E.E. = PERMANENT EMBANKMENT EASEMENT
- R = RADIUS
- R/O-W = RIGHT-OF-WAY
- (R) = RADIAL LINE
- SEC. = SECTION
- U.E. = UTILITY EASEMENT
- 1/4 = 1/4 SECTION CORNER
- SECTION CORNER
- FOUND CONC. MON. PRM L.B. 7344 (AS NOTED)
- FOUND IRC PRM L.B. 4286 (AS NOTED)
- SET CONC. MON. PRM L.B. 3591
- 5/8" IR/C, LB 3591
- PCP, NAIL/DISK, LB 3591



MATCHLINE SEE SHEET 8 OF 12

MATCHLINE SEE SHEET 9 OF 12

MATCHLINE SEE SHEET 12 OF 12

MATCHLINE SEE SHEET 6 OF 12